



# VICTORIA ROAD PRIMARY & NURSERY SCHOOL

## 17th October 2025

We've had a busy couple of weeks in school.

Year 4 have finished their three weeks of swimming and have made some fantastic progress. They have had their fun session in the pool today which they thoroughly enjoyed. A group of children have also attended a Quick Sticks sports event and were a credit to the school.

Years 5 & 6 had a science experience inside a large dome in the hall!



We all enjoyed a visit from Jen at St Budeaux library who presented the children who completed the summer reading challenge with certificates. The library is such a valuable, free resource which we are so lucky to have on our doorstep! If your child is not a member of the library, it is free to join and they are then able to borrow a huge variety of wonderful books.

Year 1 and Year 5 have also been on a local walk, learning more for their topics.

On a less fun note, staff and some pupils have their flu vaccinations!

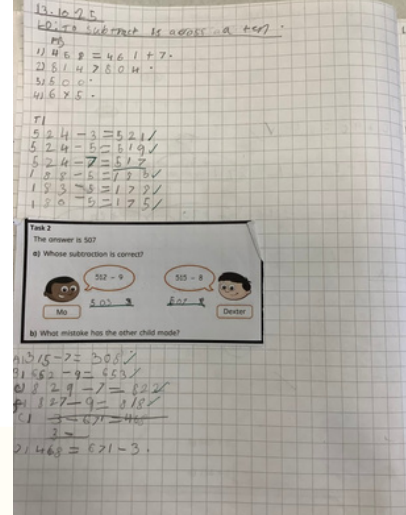
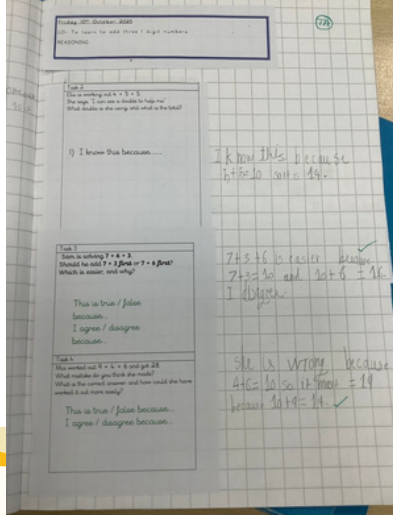
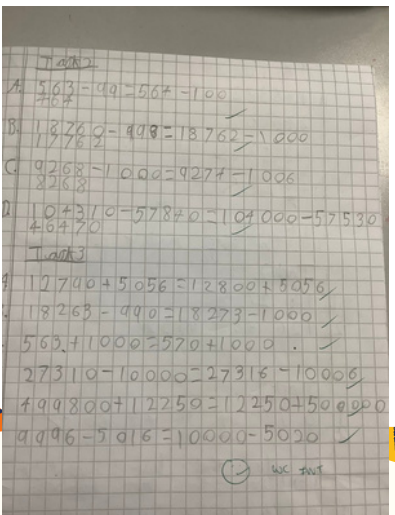
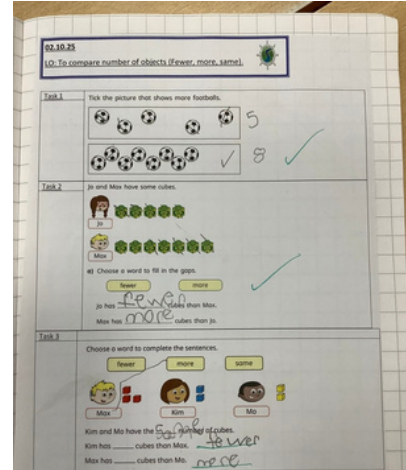
# VICTORIA ROAD PRIMARY & NURSERY SCHOOL

Today was Mrs Bambridge's last day with us as she is moving into a different career. We wish her all the very best for the future and are grateful for everything she has done for the school and its community.



Miss Hennessey will be teaching year 4 all week from now on.

We have a spotlight on maths in this newsletter and here is a glimpse of some of the learning that happens every day across the school.





# VICTORIA ROAD PRIMARY & NURSERY SCHOOL

School staff and the PTFA have been finalising dates for Christmas so look out for information next week about events and performances so that you can get dates in your diaries.

Attendance today is 97.4% which is a great percentage. Next week, we will let all parents have a letter with their individual child's attendance on. Don't forget, you can also look this up on Arbor at any time.

**Ms C Brake**  
**Headteacher**



## Parking Reminder – Keep Our Children Safe

A polite reminder to all parents and carers to avoid parking or stopping on the yellow lines outside the school, even for a quick drop-off.

These markings are there to protect our pupils by ensuring clear sightlines and safe crossing areas. Please help us keep everyone safe by parking considerately and following the rules.

Thank you for your cooperation and support.

# Dates for your diary

## Term Dates

Last Day of Term

**Friday 24<sup>th</sup> October**

Children finish at the normal  
time.

**Monday 3<sup>rd</sup> November**

School Closed

Teacher Training Day

**Tuesday 4<sup>th</sup> November**

School Open

Children to return to school.

## School Trips

Please keep an  
eye on your emails  
for  
communication  
regarding up  
coming trips,  
across the school  
for Term 2  
(November-  
December)

## Year 6

Shallowford Farm

Residential

Monday 20<sup>th</sup> October

–

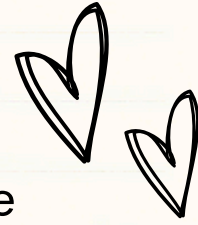
Friday 24<sup>th</sup> October



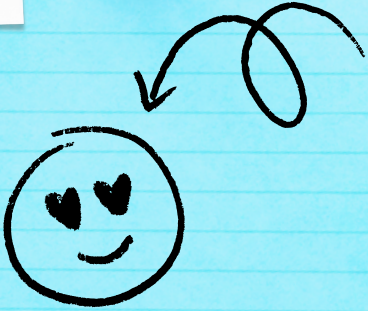
# ARBOR



Please ensure all contact details are up to date with the school office and you are checking your outstanding balances.



01



## WATER BOTTLES

Please send children into school with named refillable water bottles.

## Facebook!

We are working on using our social media platforms to get information out to parents, so please find us on Facebook.

02



03



## Community Larder

Can be located next to reception window.

Please continue to help yourselves or if you need something you can't see, speak to the office.

Donations also welcome.

C C C C C C C C C C C C C C C C

# FEATURING

NURSERY



## From Miss Glanville

This week in nursery the children have loved exploring our autumn activities. We have explored colour mixing out in our garden and making soup with all the different coloured water. We have made our own bears in the creative area using tissue paper, talking about what we can see and what we are using. The children have developed their fine motor skills putting leaves on the tree using tweezers and our fingers.



# FEATURING

YEAR THREE



## From Mrs Brinkhurst

Year 3 have been exploring the text Stone Age Boy. We highlighted the features of the text and found some exciting vocabulary. We will be using this to write our own historical stories.



# RECEPTION OPEN DAY

Come and Explore!

Friday 14<sup>th</sup> November  
3.30pm - 4.30pm

Meet our team,  
explore our provision.

Meet our Children & Family  
Support Worker and School  
SENDCO.



*Join us for a cuppa  
and biscuit.*

📍 Victoria Road Primary & Nursery School  
🌐 [www.vrpsp.co.uk](http://www.vrpsp.co.uk)  
☎ 01752 365411





VICTORIA ROAD SCHOOL

KICK START YOUR DAY!

HELPING YOUR CHILD START THEIR  
DAY THE RIGHT WAY

### Top Tips

- ★ Encourage Independence - Prepare their uniform before it's needed and support your child to get dressed by themselves
- ★ Enjoy a healthy breakfast before you leave for school
- ★ Walk all the way or part of the way to and from school if you can
- ★ Pack a healthy snack or encourage your child to choose a healthy snack at school such as fruit
- ★ Provide a clean refillable bottle that is full with water at the start of the day

#### FACT:

FOOD THAT ARE HIGH IN SUGAR CAN  
LEAD TO IMMEDIATE ENERGY SPIKES AND  
CRASHES, HAVING A NEGATIVE AFFECT  
MOOD, CONCENTRATION, AND  
BEHAVIOUR

# Half-term family learning sessions

BOOK NOW!

On Course South West's FREE October half-term family learning sessions are officially open for booking! 🕸 Fun, educational, and absolutely free. These spots go fast, so don't wait! For more info and to enrol 🏠 Free family learning activities. Includes Crafts, Maths, English, Science, languages, cooking, budgeting, first aid and BSL. — On Course South West



**FAMILY MATHS HALLOWEEN  
TREASURE HUNT**

**FREE!**

**FRIDAY 31ST OCTOBER  
10AM-12PM**

**DEVONPORT PARK  
(ROUTEWAYS ENTRANCE)**

Open to families with Primary or Secondary school aged children (5-18). Children must be accompanied by an adult (parent/carer)

E: [info@oncoursesouthwest.co.uk](mailto:info@oncoursesouthwest.co.uk)  
T: 01752 660713

on course SOUTH WEST



👤 Get Ready for a Spook-tacular Maths Adventure! 🎃

Join On Course South West for a FREE 2-hour Family Maths Halloween Treasure Hunt! You'll solve interactive maths challenges as a team in a fun, Halloween-themed event. It's the perfect way to foster teamwork, problem-solving, and a love for maths! This isn't your average classroom session—it's a chance for your family to: - Work together as a team! - Sharpen those problem-solving skills! - Discover that maths can be truly thrilling! More info and to enrol

🏠 On Course South West



**OCTOBER  
HALF TERM  
FAMILY LEARNING**

**FREE WORKSHOPS  
INCLUDING...**

- Family Learn to Weave
- Family Spooky Pumpkins
- Family Spooky Origami Decorations
- Family Renewable Mosaics
- Family Spooky Masks
- ...and more!

Parents/carers can bring up to two children per adult, and children must be a minimum of 6 years old and a maximum of 18 years old.

on course SOUTH WEST



# Nourish & Flourish

JOIN US ON OUR FREE 2-DAY  
COURSE FOR WOMEN TO SUPPORT  
THE MENOPAUSE JOURNEY

---

Day 1 - an in-depth discussion on all things menopause from improving sleep to managing symptoms.

Day 2 - an interactive workshop where we'll look at food and how what we eat can nourish the body and mind.

The Beacon, North Prospect Rd, Plymouth  
10am - 1pm  
Thursday 6<sup>th</sup> and Friday 7<sup>th</sup> November

Places are limited. For more information and to book a place email [info@foodisfun.org.uk](mailto:info@foodisfun.org.uk) or call, text, or WhatsApp 07818 450968



Latch On  
Autumn Term 2025



1st Sept – 31st Dec 2025

Monday	Tuesday	Wednesday	Thursday	Friday	Saturday
	<b>Efford</b> 10:00-11:30 High View School, Torridge Way, PL3 6JQ  <b>Plymstock *</b> 10:00-11:30 Elburton Methodist Church, Springfield Road, PL9 8PR	<b>Devonport</b> 10:00-11:00 Green Ark Family Hub Fore Street PL1 4DW  <b>Kingsbridge</b> 10:00-11:30 Kingsbridge Nursing Church, Baptist Lane, TQ7 1QD		<b>West Park **</b> 10:00-11:30 Fourwoods Family Hub, 415 Crownhill Rd, PL5 2LN  <b>Tavistock</b> 9:30-11:00 SeventySix, 76 West Street, Tavistock	<b>Cattedown: Support Only</b> 10:00-11:30 Nomony Family Hub, 27 St Johns Rd, PL4 0PA  <b>PLEASE NOTE FROM 1ST NOVEMBER THIS SESSION WILL BE AT THE CUMBERLAND CENTRE</b>
<b>Plympton *</b> 1:00-2:30 Rees Wellbeing and Family Hub, Mudgeway, PL7 2PS  <b>Central *</b> 1:00-2:30 Manor Street Children's Centre, 25 Manor Street, Plymouth, PL1 1TL	<b>North Prospect (LARK) *</b> 1:30-3:00 North Prospect Family Hub, 91-93 North Prospect Road, Plymouth, PL2 2NA	<b>Cattedown</b> 1:00-2:30 Nomony Family Hub, 27 St Johns Rd, PL4 0PA (Alongside Baby and Me)  <b>Honicknowle*</b> 1:00-2:30 St Francis of Assisi, 57 Little Dock Lane, Plymouth, PL5 2LP	<b>Estover</b> 1:00-2:30 ELM Wellbeing Hub, Leypark Walk, PL6 8UE  <b>Devonport *</b> 1:30-3:00 Morice Town Family Hub, Charlotte Street, PL2 1RJ	<p>* These groups run alongside Chatterbox Sessions and offer Child Health Clinic</p> <p>** Bra Fitting Service Available</p>	

National Breastfeeding Helpline	24 Hours	0300 100 0212
Plymouth Latch On Service	Facebook Page and Messaging Service	<a href="http://www.facebook.com/plymouthlatchon">www.facebook.com/plymouthlatchon</a>
Health Visiting Service	9:00am - 5:00pm Week Days	01752 434008
Midwifery Service (Babies under 28 days)	24 Hours	01752 430200
NCT - Breastfeeding Helpline	8:00am - Midnight Daily	0300 330 0700
Family Hubs and Emerging Family Hubs	9:00am - 4:30pm Week Days	Nomony 01752 261844 Whitleigh 01752 875933 Fourwoods 01752 366795 Manor Street/ Green Ark 01752 686750 Rees 01752 340550 The Barn 01752 362320 North Prospect 01752 313293 Morice Town 01752 208660



PLYMOUTH FAMILY HUBS

PLYMOUTH FAMILY HUBS

Little Explorers

Play Group for children aged 0-4 years

FREE no need to book

Discover a world of joy and learning at our playgroup sessions – where every day is a new adventure for your little one!

Thursday @ Elm Church 10-1130am (Term time only)

For Dads & male carers – partners welcome

Fridays @ JUMP 130-230 (Term time only. Free entry to jump included from 1230)



POP-UP BARNARDO'S SHOP



19TH NOVEMBER 2025 9-4PM  
WHITLEIGH FAMILY HUB FOUR GREENS COMMUNITY TRUST 15 WHITLEIGH GREEN PLYMOUTH, PL5 4DD

Barnardo's retail team will be popping up in our Family Hub to hold a sale with items that will range from £1 to no more than £20, these items will be brand new and will include gift sets, wrapping paper, cards and Xmas jumpers for children. These items have been generously donated to Barnardo's retail shops and through the Barnardo's Retail Amazon Wish List. The onsite cafe will also be open for snacks and drinks. Cash and Card payments accepted.

